

About the Plan

Simply put, a Source Water Protection Plan is designed to help prevent contamination of source water. Shelley's sources of water comes from Wells #1, #3, #4 and #5. Protecting these wells are critical to our community.

Through public awareness and education, source water protection helps protect the land area that supplies our well with ground water. Voluntary best management practices (BMPs) can be undertaken by homeowners and are a primary component of the protection plan. Developing a source water protection plan will offer all residents an important opportunity to help ensure a high-quality drinking water supply, help keep water costs low, and protect our families.

You Can Help, it's easy!

Get actively involved in protecting your community's drinking water.

- **Don't dump** old lawn chemicals, gas, or oil on the ground or a ditch.
- **Don't over-fertilize** your lawn or garden, and be careful how you apply chemicals.
- **Pick up after your dog** and dispose of your dogs poo properly.
- **Teach your children** where your family's drinking water comes from.

Contact

City of Shelley
(208) 357-3390

For more information on your community's plan, kids' activities, and community resources, contact:

Idaho Rural Water Association
(208) 343-7001
www.idahoruralwater.com

or
Idaho Department of Environmental Quality
(208) 236-6160
www.deq.idaho.gov

**Safe, clean drinking water...
it's everyone's responsibility**

Funding and support for this brochure were provided by:

Idaho Rural Water Association
City of Shelley
October 2016



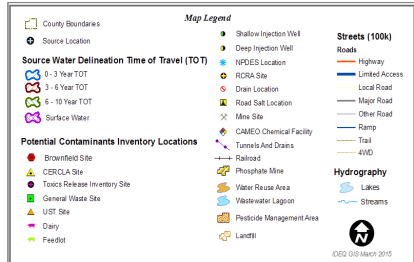
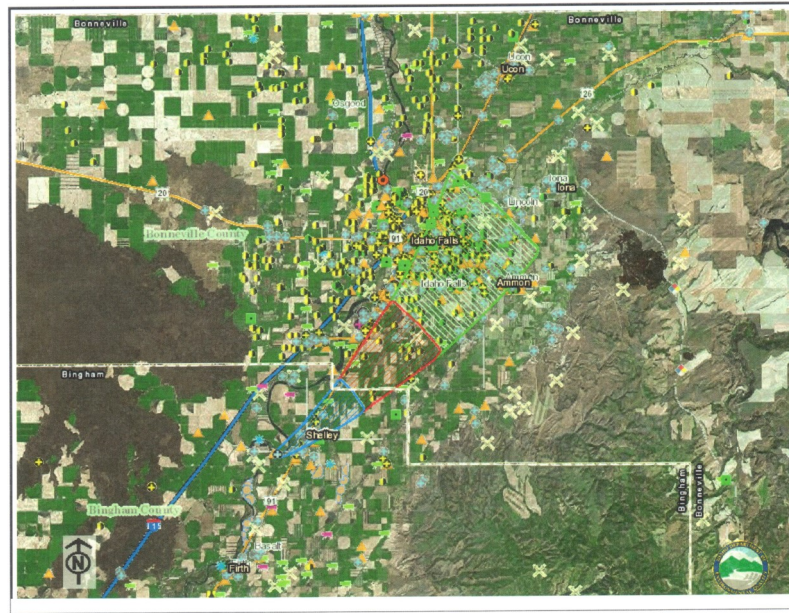
Your Community

Your Source Water Protection Plan

**Sponsored by the
City of Shelley**

What is Source Water?

Source water is untreated water from surface and ground sources. Groundwater is water from rain or snow that seeps into the ground and pools in cracks and spaces beneath the earth's surface. It is a vital resource for the City of Shelley and other neighboring communities. Groundwater supplies are not endless and can be depleted. Human activities can pollute them so severely that the damage may be very difficult and costly to clean up.



Time-of-Travel Zones (TOTs) in years

This map illustrates the source water delineation for our Well #5. The outlined areas are the portions of the aquifer that supplies our Well #5 with groundwater.

Within the **blue hatch-line zone**, it is predicted a drop of water at the ground surface will take **0-3 years** to travel through the ground to Well #5 and into the water supply that comes to your home. Within the **red hatch-line zone**, it is predicted to take **3-6 years**, and within the **green hatch-line zone**, **6-10 years**. **Our homes are located directly above our only source of water.**

Protecting our source of water is critical to the welfare of our community. Simple, voluntary steps that each of us can take will, in the end, add up significantly in our protection efforts. These include being careful of how much (and how often) chemicals are applied to your yard and/or the outside of your home, making sure you remove the hose after filling drinking troughs before shutting the hose off, and ensuring no cross-connections exist within or outside your home.

What is Source Water Protection?

Source Water Protection is simply protecting sources of water from contamination or over-use. We can help protect sources of water by managing the influence on them from natural and human activities to ensure water quality and water quantity is maintained.

Protecting our source of drinking water does not have to cost anything. There are lots of things each of us can do, voluntarily, to help safeguard our most precious resource.

What will Protection Do?

- Ensure there is enough safe, clean drinking water available for ourselves and neighboring communities.
- Aid in protecting the health of our families and visitors to our community.
- Help to protect our single source of water, and any future source of water.
- Limit or reduce costs that might otherwise incur as a result of a contamination event.
- Provide each resident with the opportunity to gain a better understanding of this critical resource.