

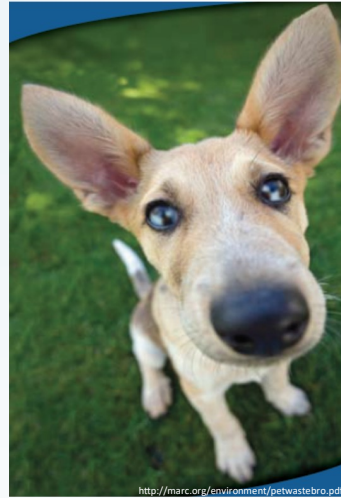
Pet Waste May Affect Your Health

Pet wastes contain bacteria and pathogens that can spread diseases between pets, as well as to humans. The most at-risk groups are children playing outside and adults working in their gardens and/or flower beds. Some of the infections and diseases that can be spread through pet waste are:

- **E. coli:** a bacterial infection causing diarrhea, cramping, nausea and vomiting, urinary tract infections and fatigue
- **Salmonella:** a bacterial disease causing nausea, vomiting, abdominal pain, diarrhea, fever and chills
- **Hepatitis:** a bacterial disease that causes fatigue, nausea and vomiting, abdominal pain or discomfort, especially in the area of one's liver, low-grade fever, dark urine and jaundice
- **Giardiasis:** a protozoan infection causing diarrhea, cramping, fatigue and weight loss
- **Cryptosporidiosis:** a protozoan infection causing diarrhea, cramping and a low fever
- **Toxoplasmosis:** a protozoan infection causing a low-grade fever, cough, headache, fatigue and swollen glands

Scoop the poop, bag it,
and place it in the trash!

Thank you for being a
responsible pet owner!



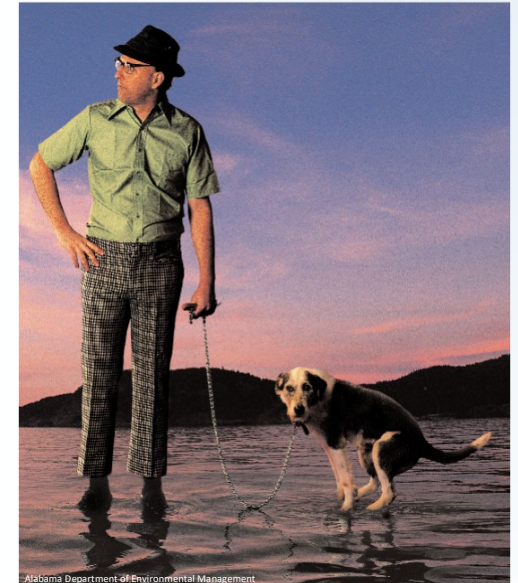
**For more information on how you
can protect water quality,
please contact us!**

**Idaho Rural Water Association
6065 W. Corporal Ln.
Boise, ID 83704
(208) 343-7001**



Funding and support for this brochure were provided by
Idaho Rural Water Association
www.idahoruralwater.com
2016

If you have a dog,
it's your Doodie



*When your dog goes on the lawn,
remember, it doesn't just go on the
lawn.*

**A Pet Waste Reduction Effort
Sponsored by the
City of Shelley
PWS#ID6060071**

If you think picking up dog poop is unpleasant, try drinking it.

So here is how it works. You take the dog out for a walk and it poops on the grass or the street. That poop contains bacteria and viruses, and is now a health risk to people and other pets. When it rains or storms, the poop is carried with surface water into storm drains or ditches, and eventually enters our streams, rivers and lakes where people may drink or come into contact with it.

Please be a responsible pet owner, and pick up after your pet.



Fecal coliform bacteria machine



How can you not love them? Dogs bring great joy into our family's lives. But impacts to surface water associated with dog poop can be serious. They include:

- Increased loading of nitrogen and phosphorus that can lead to increased weed and algal growth in the river, lowered oxygen levels and increased fish kills
- Increased organic matter which, when it decays, can reduce oxygen levels for fish and other aquatic animals
- Increased loading of bacteria and pathogens that can get people and other pets sick

One pound of dog poop can contain 10,000,000,000 fecal coliform bacteria!

Yep, that is 10 billion.

So What Should You Do About It?

Its easy!

- When available, use a pet waste disposal station provided by local communities and parks.
- Always bring baggies for your pet, and carry an extra one for a pet in need.
- Waste can be disposed of by securing the waste in a bag and throwing it in the trash or a pet waste disposal station. Biodegradable bags are available for purchase online.
- Waste can be disposed of by flushing it down the toilet (if you are served by a sanitary sewer utility) where it will be treated. Just don't flush the bag!
- Pet waste is not a fertilizer and should never be used in your flower beds, vegetable garden or compost pile.

